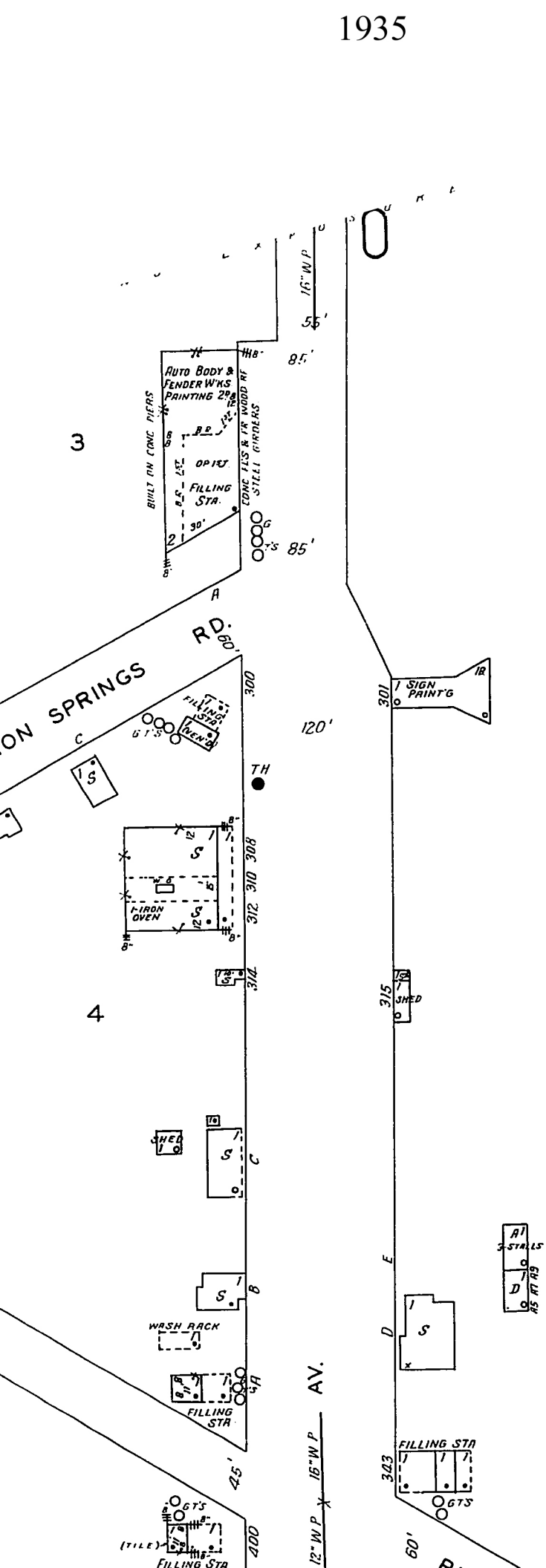
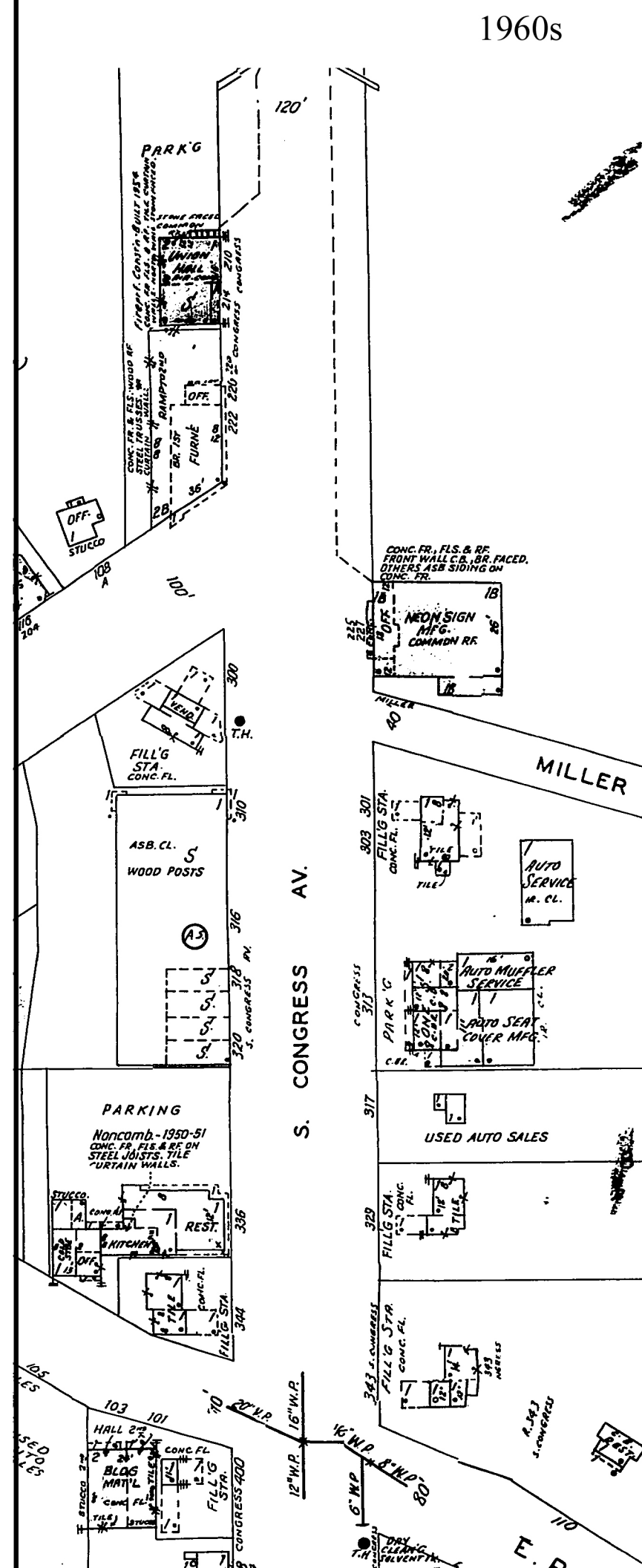




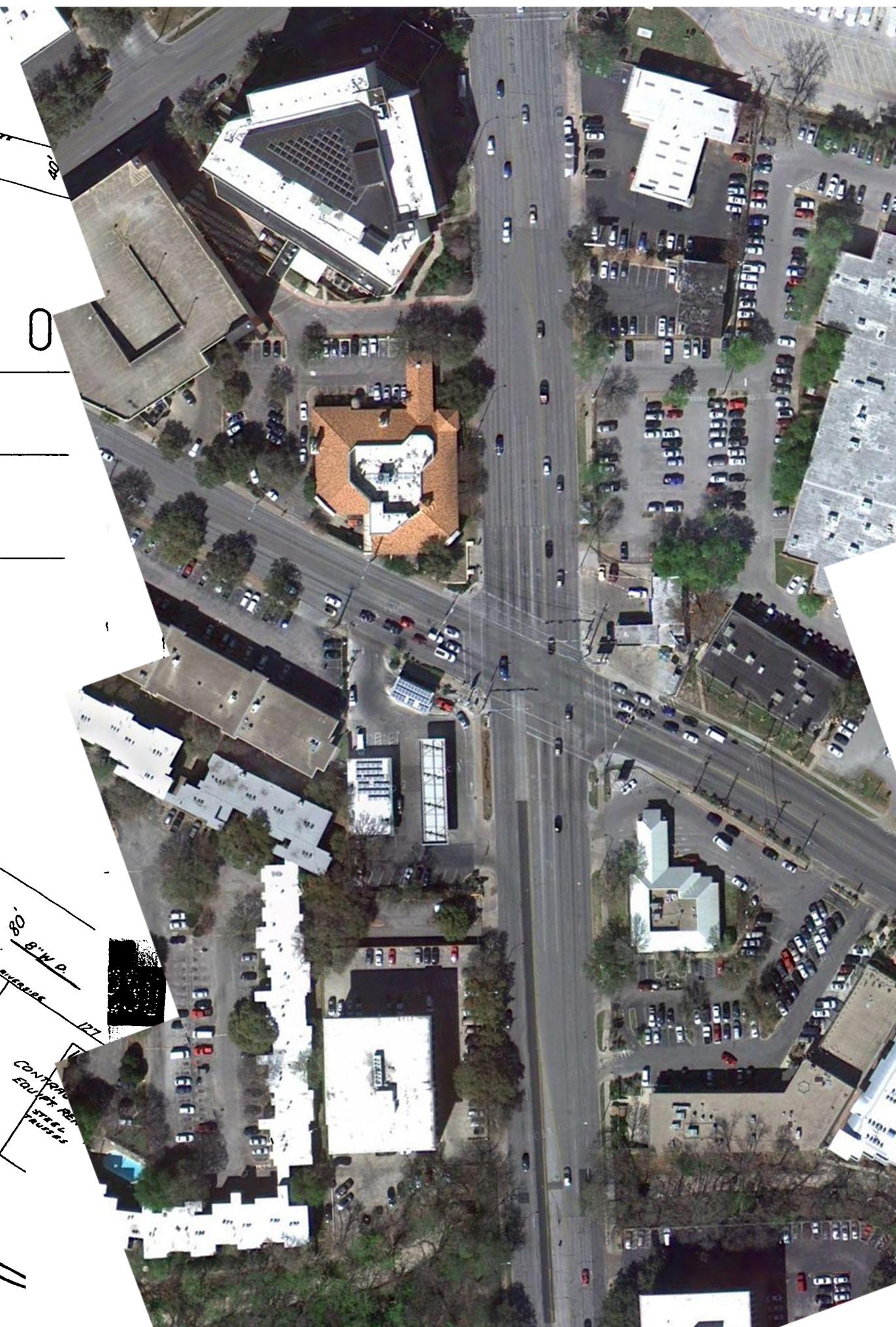
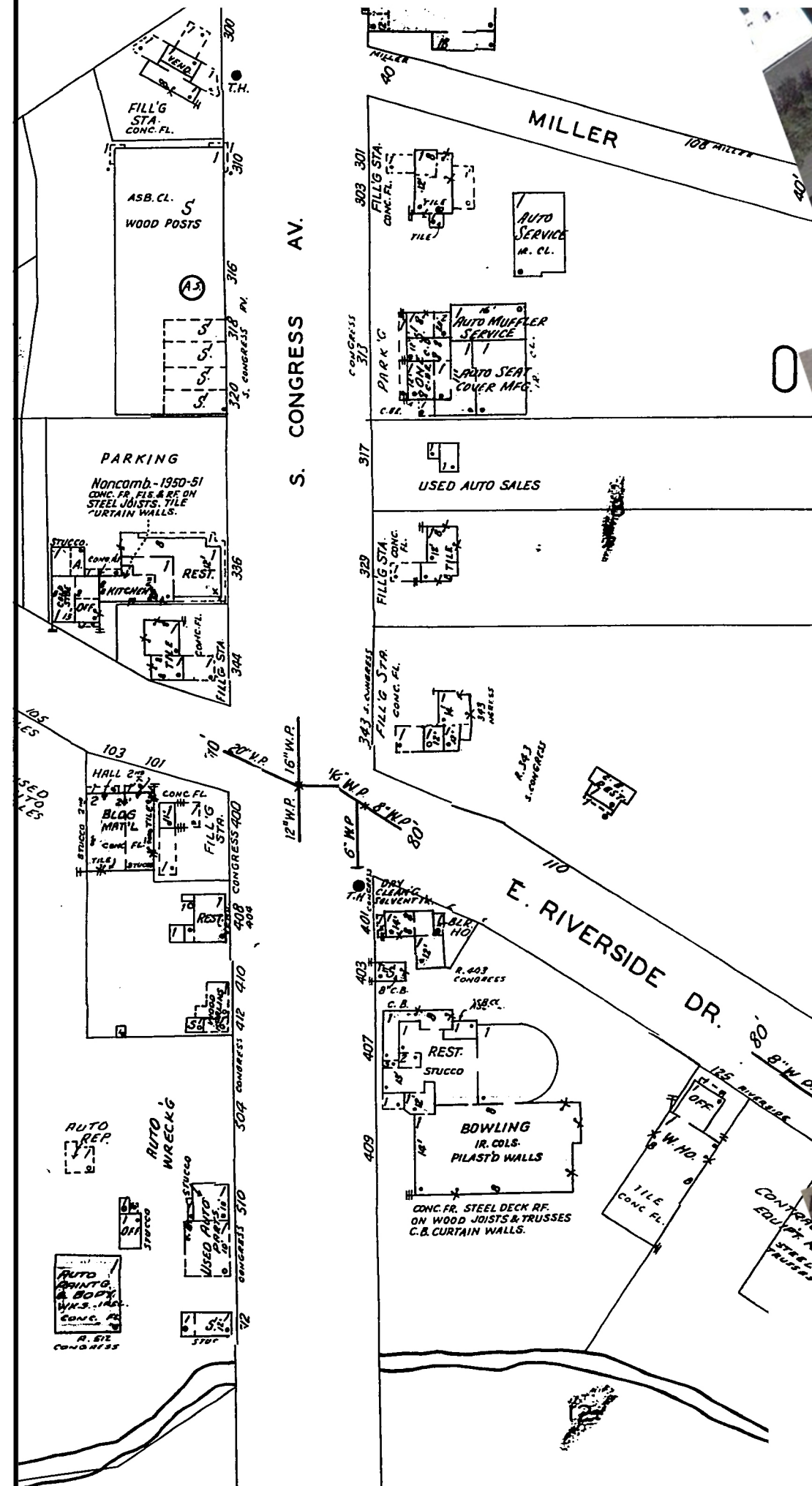
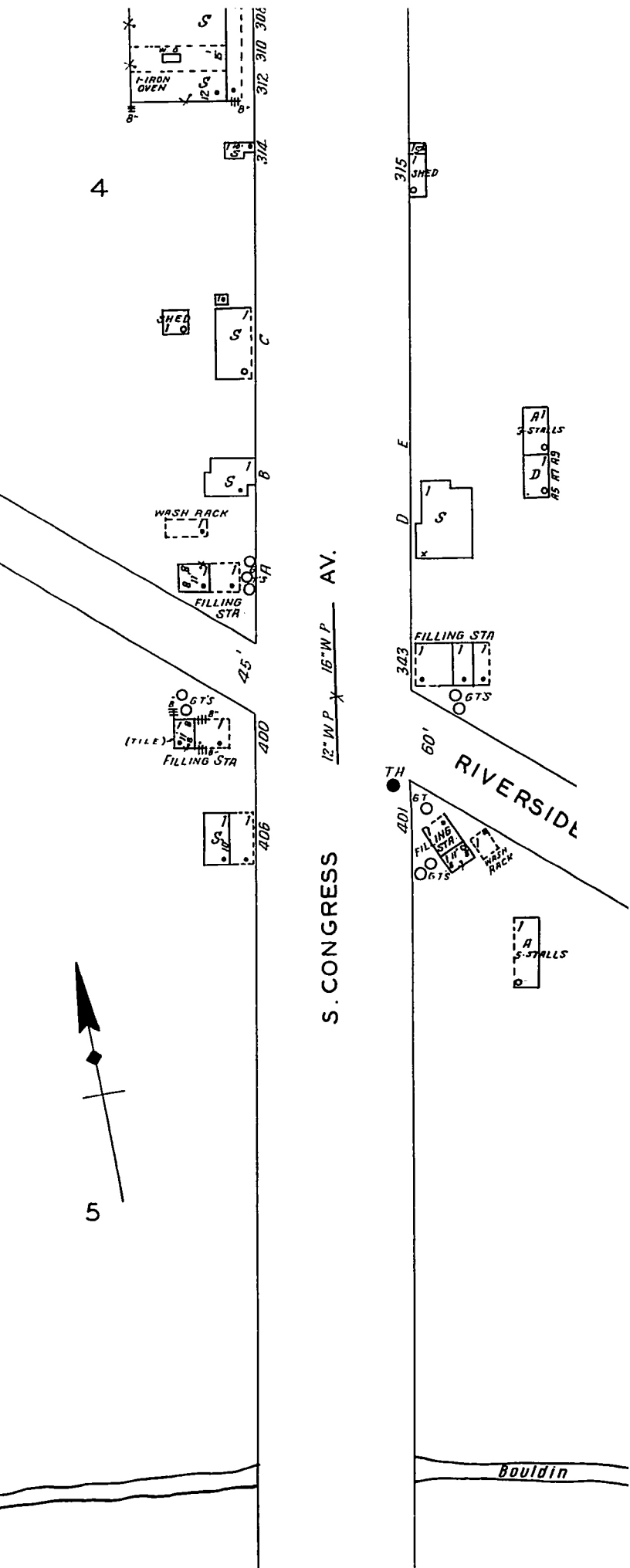
1935



1960s

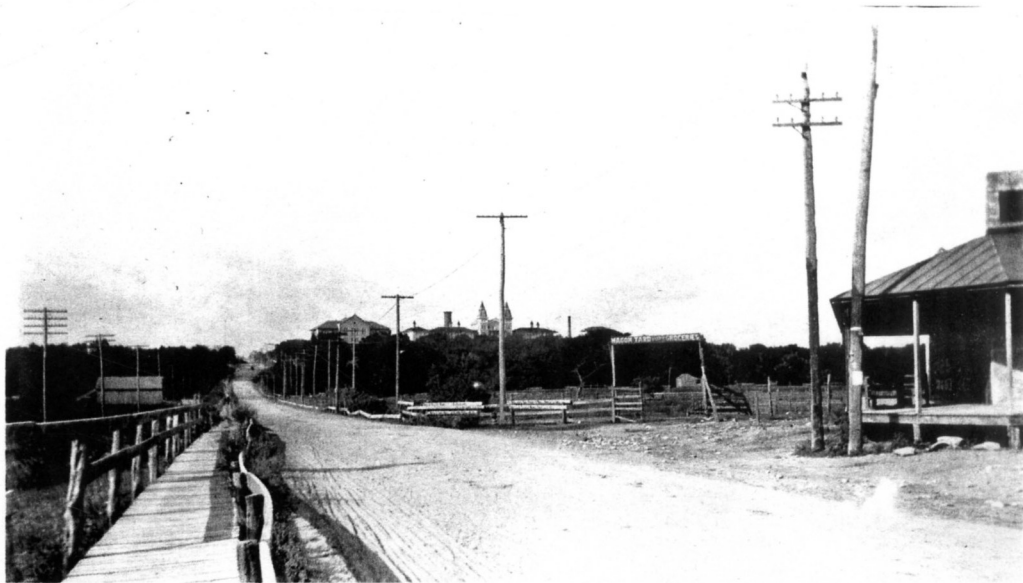








Congress Ave Bridge, c. 1900





AF - STREETS - CONGRESS AVENUE -  
1900-1919 S5710(2)

near riverside, looking north

C04879





AF - STREETS - CONGRESS AVENUE -  
1900-1919 S5710(2)

C04881

near riverside, looking south





AF - STREETS - CONGRESS AVENUE -  
1900-1919 S5710(2)

C04880

near riverside, looking north

Austin History Center





AF - STREETS - CONGRESS AVENUE -  
1920-1939

S5710(3)

@ riverside, looking south. c. 1930

PICA 20583



BOONE,  
AUSTIN, TEX.



1930?

@ riverside, c.1930

(before flood, before UT tower)

AF - STREETS - CONGRESS AVENUE - S5710(3)  
1920-1939

C00622

Austin History Center





1935 Flood (followed by 1940 Tom Miller Dam)





1936  
@ riverside, c. 1936  
(after flood, UT tower)

AF - STREETS - CONGRESS AVENUE  
1920-1939

S57

PICA 17892

Austin History Center





@ riverside, c. 1961

1961

AF - STREETS - CONGRESS AVENUE S5710(5)  
1960-1979

PICA 01772





AF - STREETS - CONGRESS AVENUE - S5710(5)  
1960-1979

1964

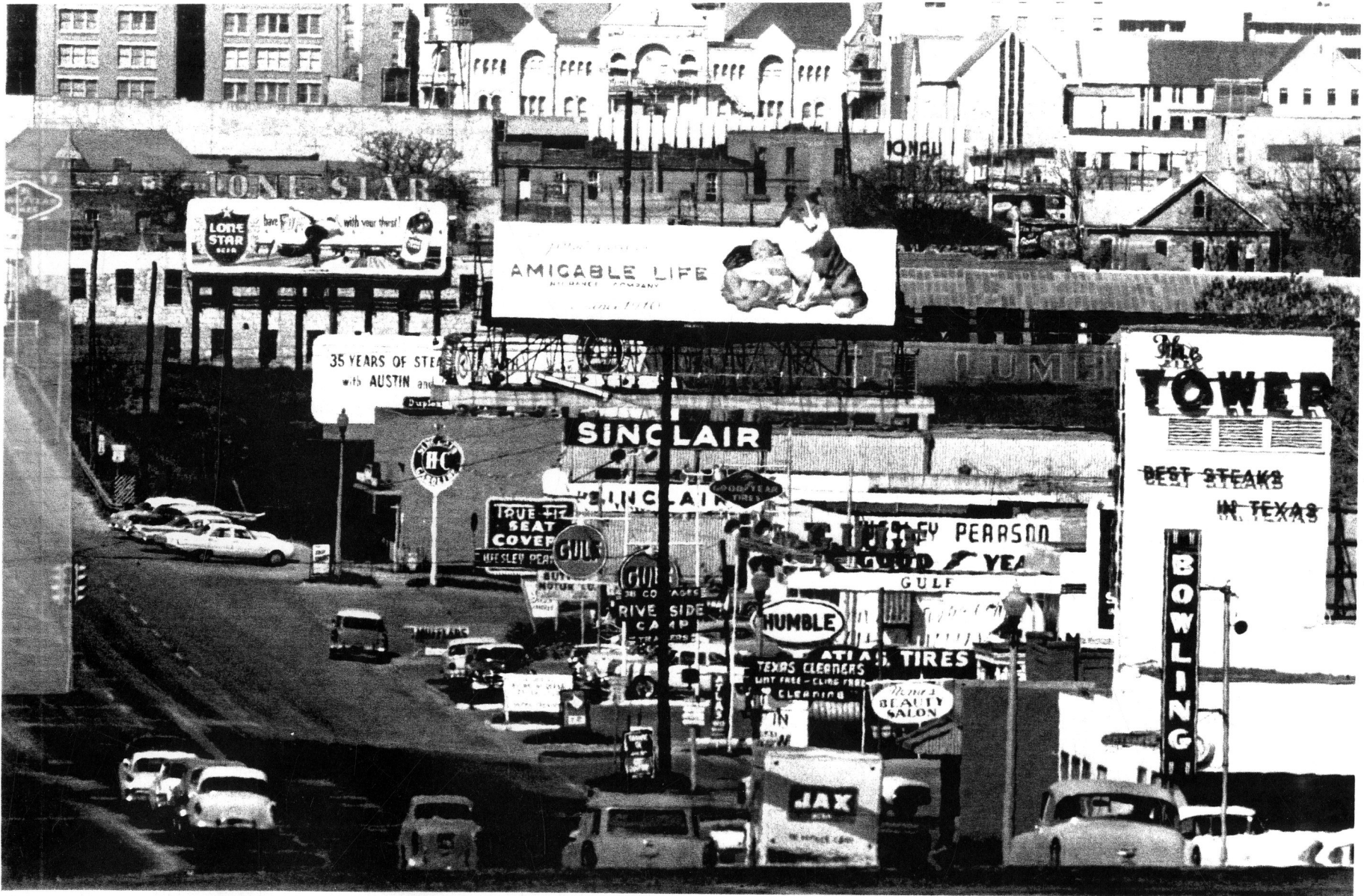
@ barton springs rd, looking south, c. 1964

PICA 17902





@ riverside and barton springs roads, in the 1960s





AF - STREETS - CONGRESS AVENUE - S5710(4)  
1940-1959

C06348

1951 @ E. WRS, LP  
maybe at riverside, where chevron is now, c. 1950s





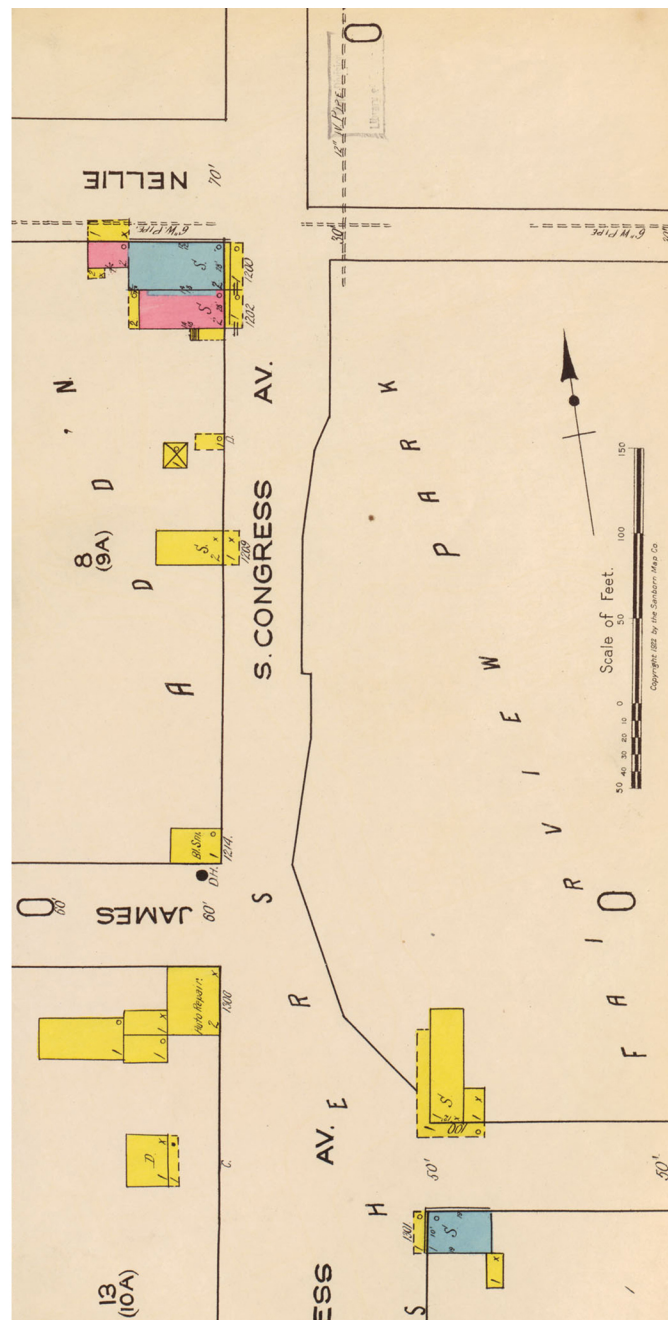
0 FT. TO ONE INCH  
100 200  
by the Sanborn Map Co

by the Sanborn Map Co

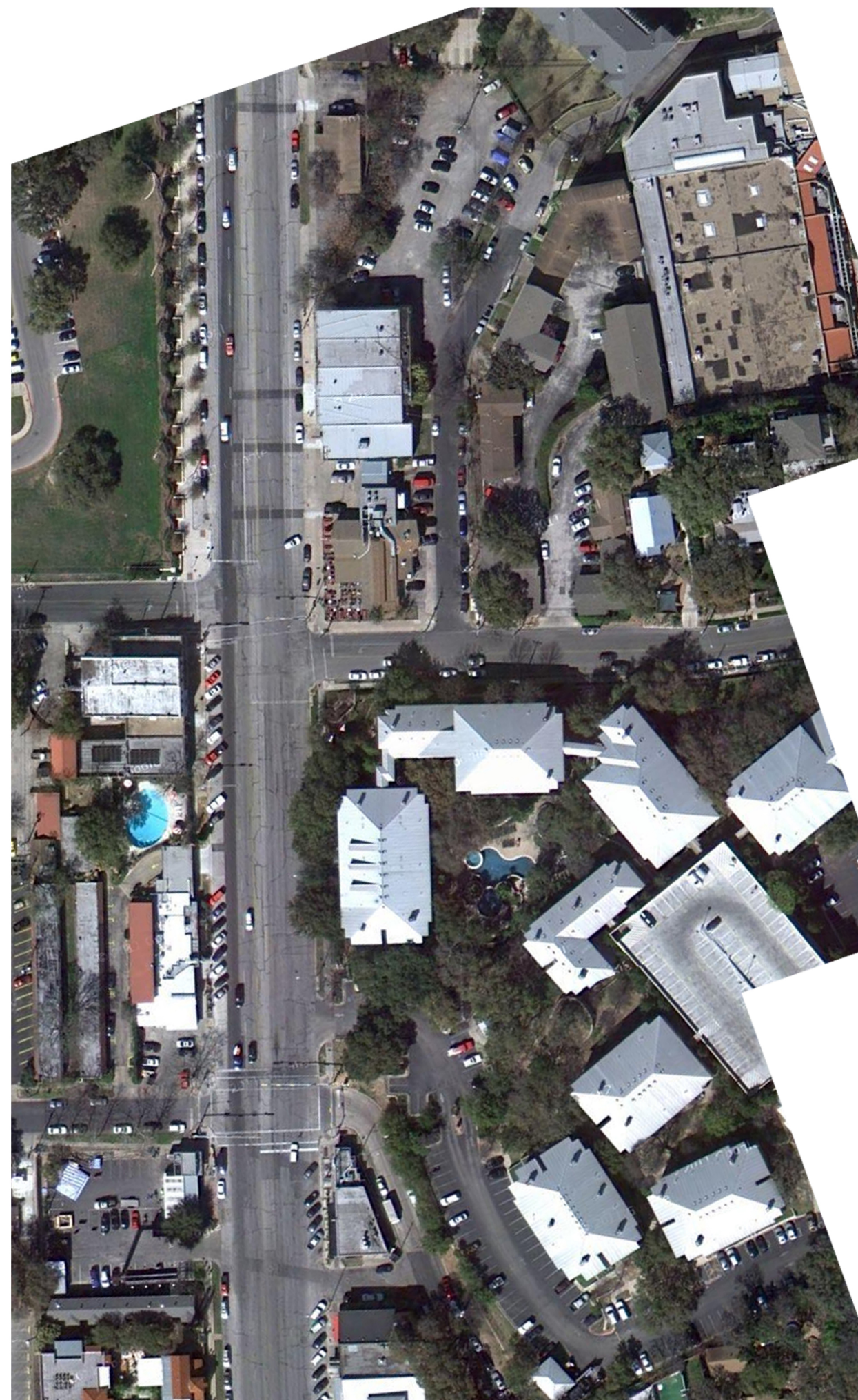
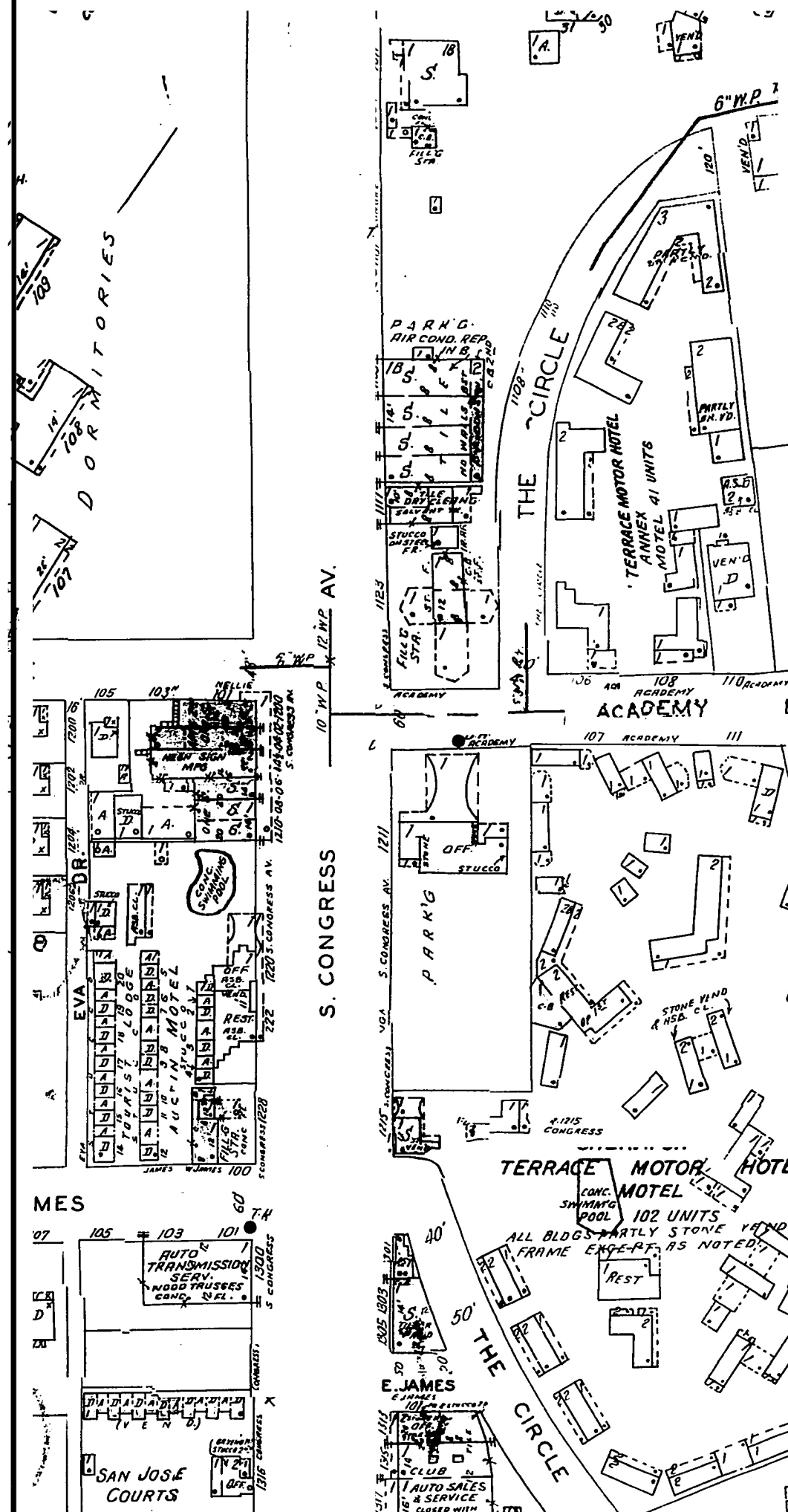




1922



1960s





eck store at Nellie, c. 1892. currently Blackmail



OCI • 65

1892

Austin Hill



1911





AF - STREETS - CONGRESS AVENUE -  
1900-1919 S5710(2)

Sept 1914

@ nellie/academy, c. 1914

PICA 02549



Austin History Center



AF - STREETS - CONGRESS AVENUE -  
1900-1919 S5710(2)

Just south of Academy Sept '14

looking south

C00494





AF - STREETS - CONGRESS AVENUE - S5710(3)  
1920-1939

C00481

1929

@ nellie/academy



Austin History Center

*Austin Street Paving  
Southwest Bitulithic Co. Contractor  
H.R.F. Holloway Consulting Engineer*

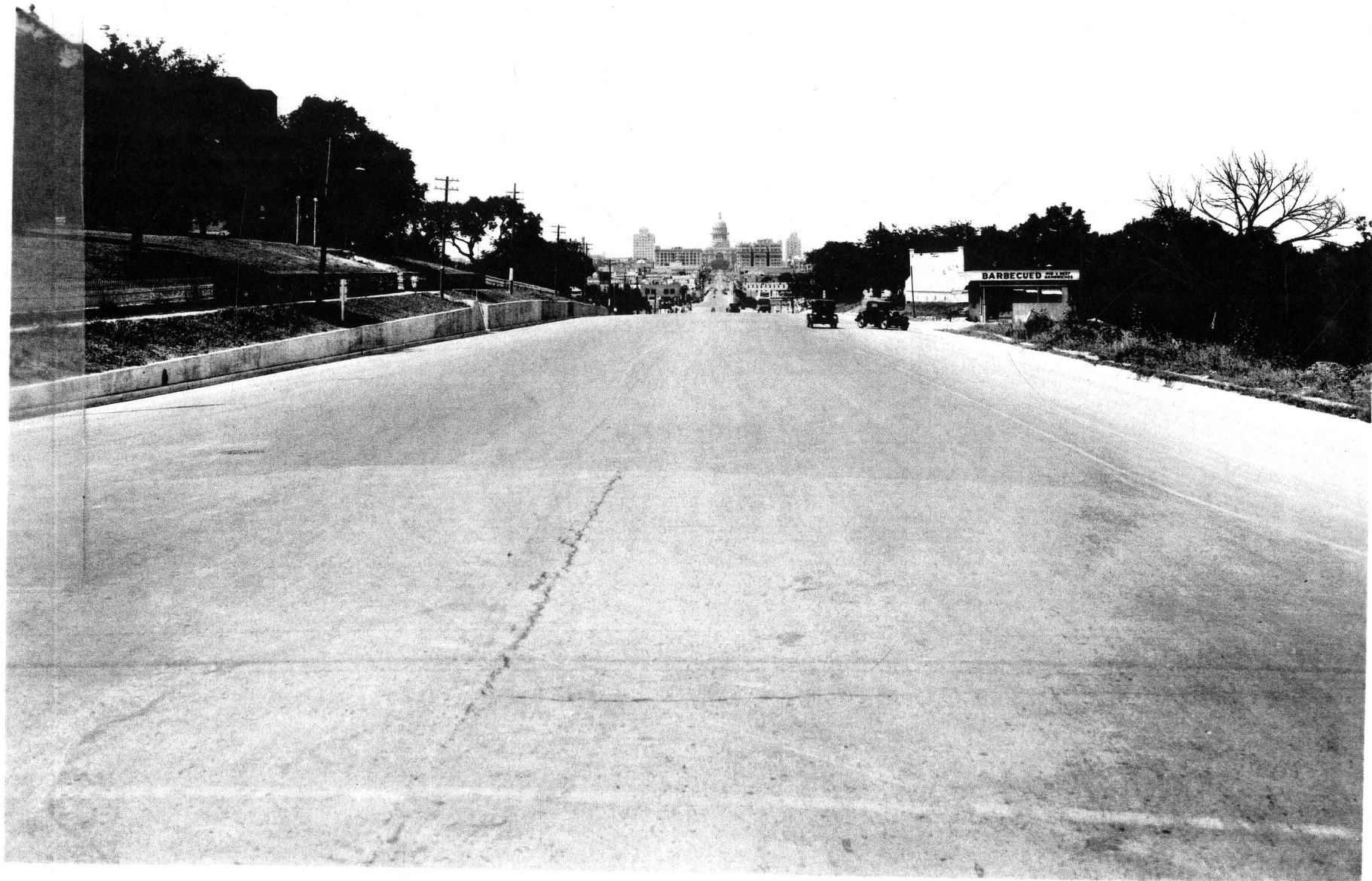


205

F - STREETS - CONGRESS AVENUE - S5710(3)  
1920-1939

02113

Austin History Center



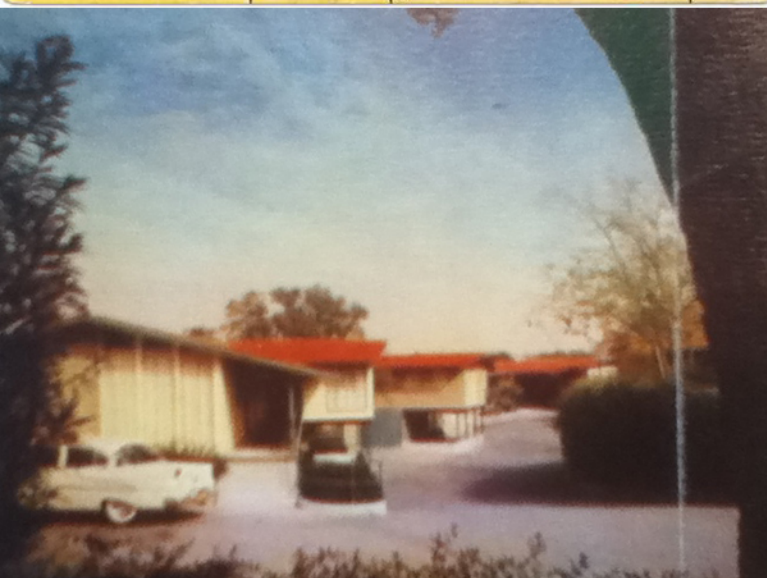
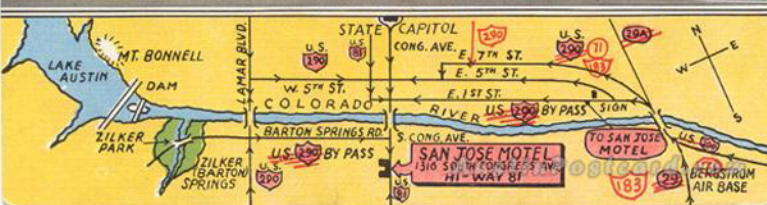
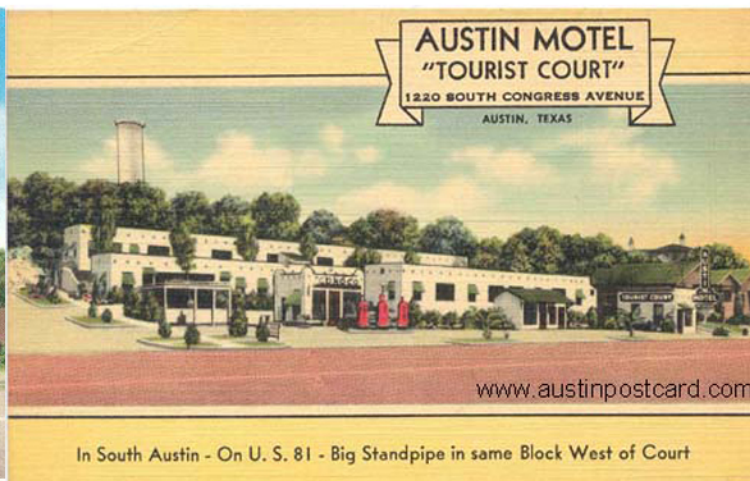


Academy St 1964  
north of nellie, looking south, c. 1960s

Austin History Center







San Jose

Terrace

Austin Motel





1971

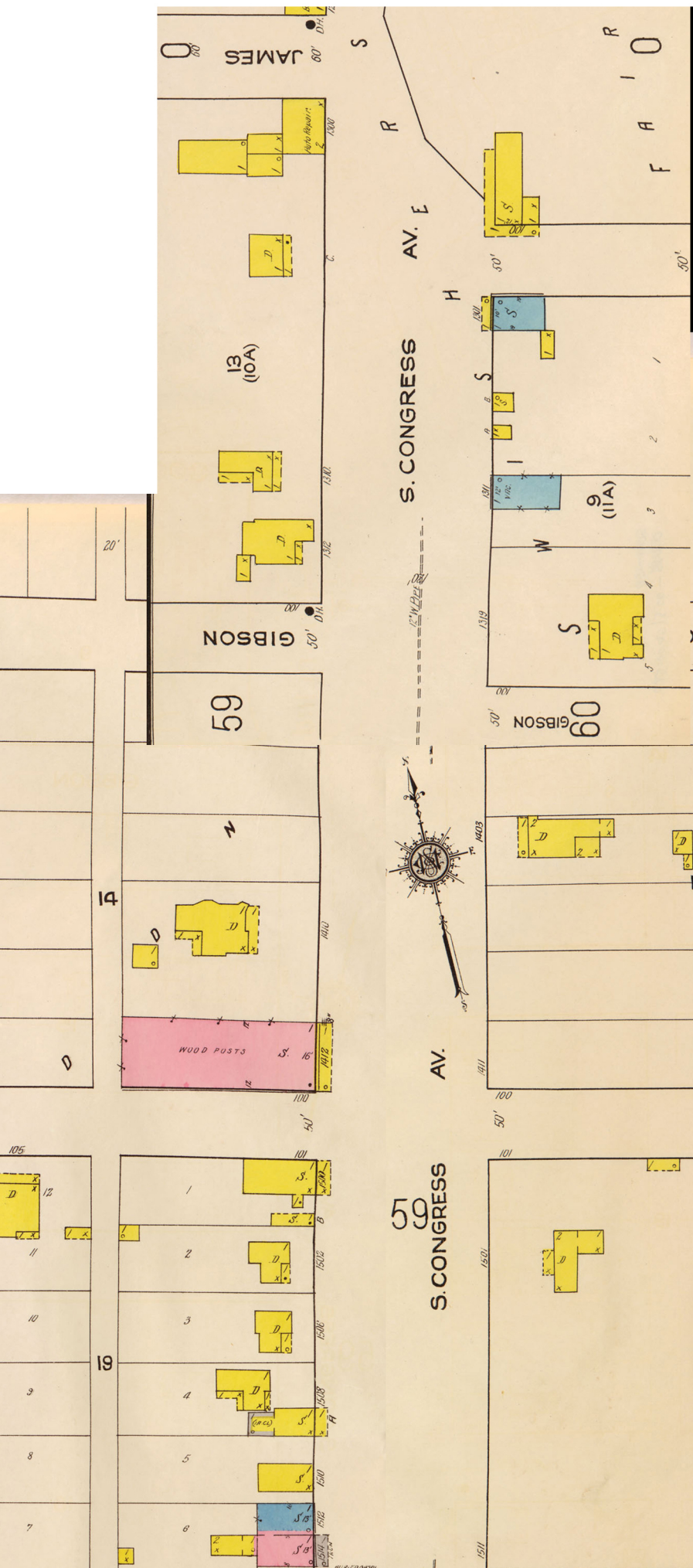
old eck store building @ nellie



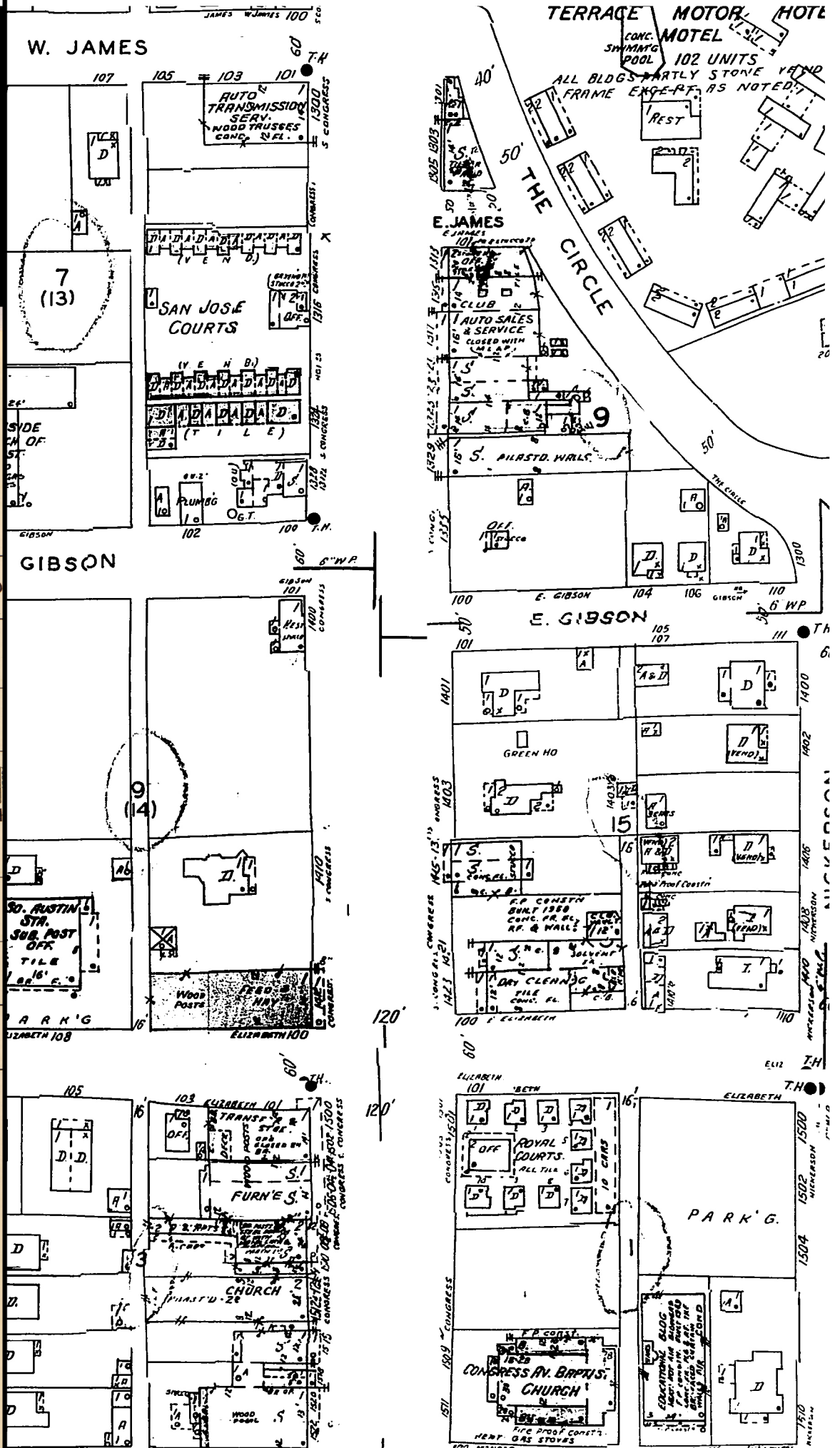
Austin History Center



1922

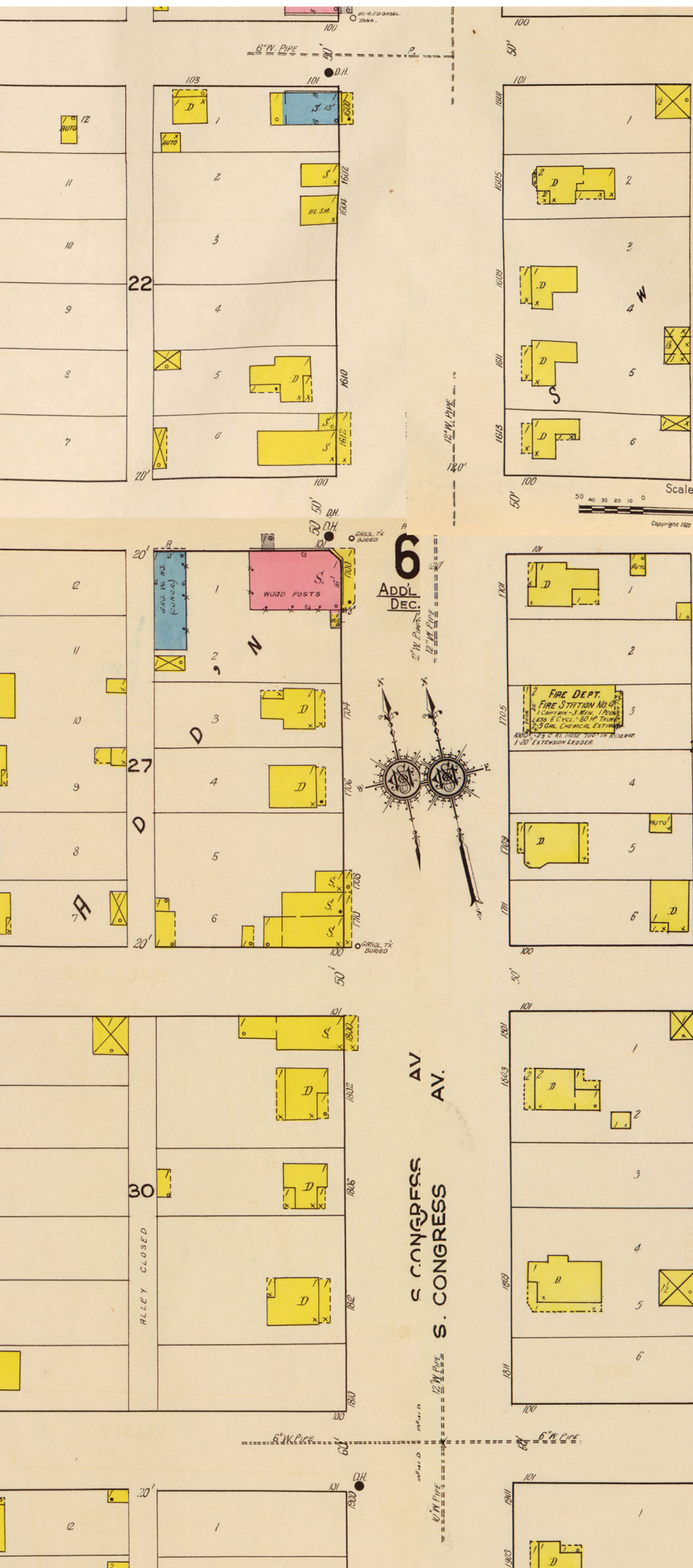


1960s

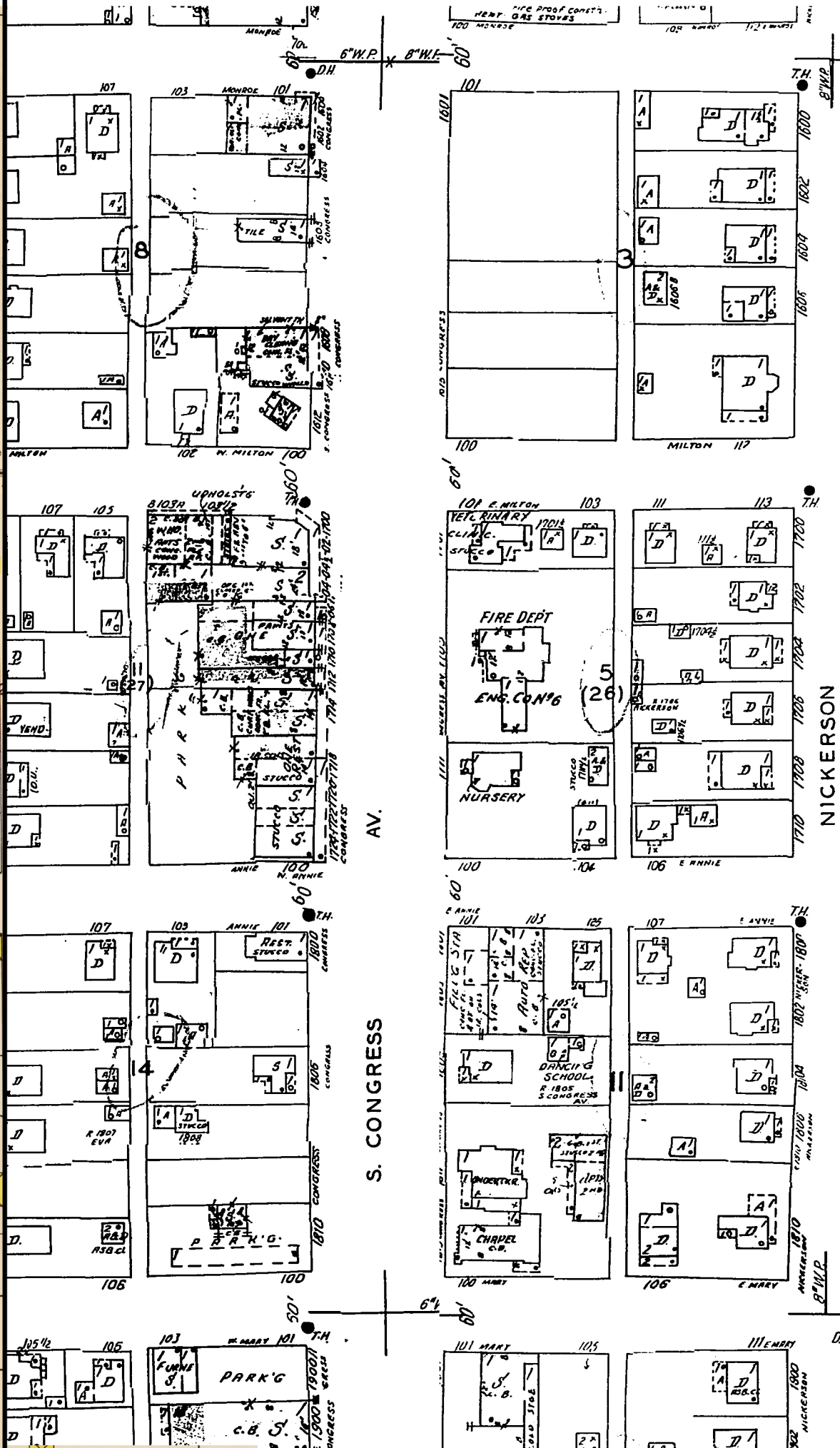




1922



1960s





AF - STREETS - CONGRESS AVENUE - S5710(3)  
1920-1939

305  
@ monroe, looking north

C00491



Austin History Center



AF - STREETS - CONGRESS AVENUE - S5710(5)  
1960-1979

PICA 17907

looking south @ Annie 1964

north of light @ monroe(not annie), looking south

Austin History Center





AF - STREETS - CONGRESS AVENUE - S5710(5)  
1960-1979

looking south a Annie's light 1964

@ monroe(not annie), looking south

PICA 17906

Austin History Center





C05561

1943  
northwest corner @ annie



Austin History Center